

Archaeological Investigations Northwest, Inc.

Obsidian Hydration Dating— ORDER FORM

Contact Person: _____ Organization: _____

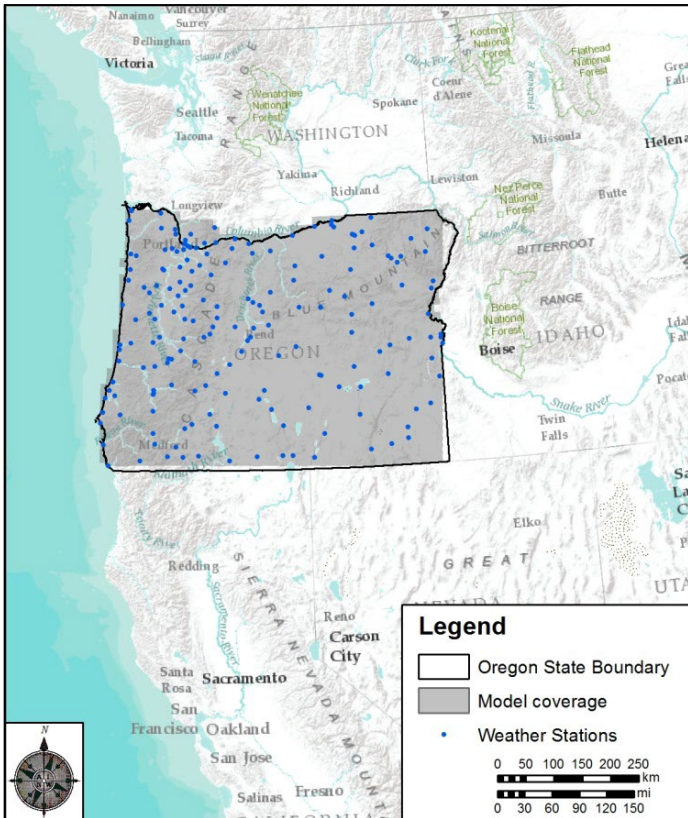
Email: _____ Phone: _____ Date: _____

Instructions: Provide information below to order date estimates. Do not send artifacts. Call contacts on reverse side if you have questions about submittal information or pricing.

Site Number	Catalogue/ Provenience	Obsidian Geochemical Type (Pick from List)	Location				Hydration Rim	
			UTM (NAD 83) <u>OR</u> Lat/Long (WGS 84) (Degrees Decimal)			Depth Below Surface (cm)	Microns	Year of Study
			Zone	Easting/Latitude	Northing/Longitude			
E.g. 35MA375	Lot 2 Spec 01	T43	10	E 500873	N 4965238	20	4.2	2017

Note: Use additional sheet for more than five dates.

Geographic Extent of Model



Obsidian Geochemical Type

- | | |
|--------------------------------|------------------------------------|
| T1 - Bald Butte | T31 - Juniper Springs 1 |
| T2 - Beatys Butte | T32 - Juniper Springs 2 |
| T3 - Big Obsidian Flow | T33 - Jnpr. Springs 2 /Whtr. Ridge |
| T4 - Big Stick | T34 - Little Bear Creek |
| T5 - Blue Mountain | T35 - Little Bear Ck. /Whtr. Ridge |
| T6 - Blue Spring | T36 - Long Valley |
| T7 - Buck Mountain | T37 - Massacre Lake/Guano Valley |
| T8 - Cougar Mountain | T38 - McComb Butte |
| T9 - Cowhead Lake | T39 - McComb Butte /Tucker Hill |
| T10 - Cowhead Lake A | T40 - McKay Butte |
| T11 - Cowhead Lake B | T41 - Mosquito Lake |
| T12 - Curtis Creek | T42 - Newberry Volcano |
| T13 - Dog Hill | T43 - Obsidian Cliffs |
| T14 - Drews Creek/Butcher Flat | T44 - Parsnip Creek |
| T15 - East Medicine Lake | T45 - Quartz Mountain |
| T16 - Eldorado | T46 - Qrtz. Mountain /McKay Butte |
| T17 - GF/LIW/RS | T47 - Rainbow Mines |
| T18 - Glass Buttes | T48 - Rimrock Spring |
| T19 - Glass Buttes 1 | T49 - Round Top Butte |
| T20 - Glass Buttes 3 | T50 - Silver Lake/Sycan Marsh |
| T21 - Glass Mountain | T51 - South Warners |
| T22 - Grasshopper Group | T52 - Spodue Mountain |
| T23 - Gregory Creek | T53 - Sugar Hill |
| T24 - Hawk's Valley | T54 - Surveyor Spring |
| T25 - Horse Mountain | T55 - Tucker Hill |
| T26 - Indian Creek | T56 - Tule Spring |
| T27 - Indian Creek Buttes | T57 - Venator |
| T28 - Indian Creek Buttes B | T58 - Whitewater Ridge |
| T29 - Inman Creek A | T59 - Wolf Creek |
| T30 - Inman Creek B | T60 - Yreka Butte |